

# PRIVATE GAME FARM

---

## PROJECT INFORMATION

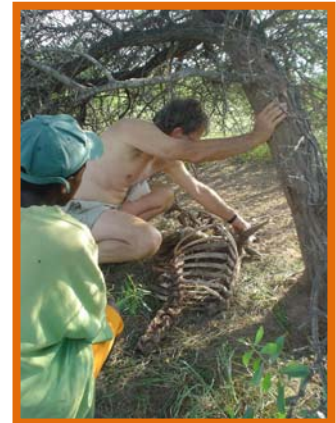
The Private Game Farm Project is situated near the town of Hoedspruit, and adjacent to the world renowned Kruger National Park, in the 65000 hectare Balule Private Nature Reserve.

With no substantial fences between the project and Kruger National Park, no internal fences within the reserve and no animals in camps and cages (captivity), volunteers are offered an unmatched stay at this project.



The indigenous Flora enjoys maximum protection and the wild animals migrate freely between Private Game Farm and Kruger National Park. This is not a man created Big 5 area, and is one of the largest of the few areas in South Africa that is still a wilderness, as it was from the day of creation.

Being adjacent to Kruger National Park, most of the herbivores, carnivores, omnivores, reptiles, snakes, primates, smaller cats, eagles, vultures, birds, insects and their relatives that you find in Kruger National Park, roam freely on this Reserve. During the walks and drives on offer, you will almost always see animals.



## VOLUNTEER INVOLVEMENT

If you are interested in learning more about the function of a Private Game Reserve and to be trained in the management of such a reserve, then this is the right place for you. Volunteers are taken "behind the scenes", and are taught how to build your own game farm, the principles of wild life management, conservation and preservation of the eco system.



It is not all academics – you will play the role of and learn about the function of the classic African Game Ranger, plus have ample opportunities to apply the theory you've learned, while doing Game Reserve maintenance and improve on conservation techniques at the project.

Volunteers are also offered the unique opportunity to using the project as a base program and join other programs in and around the Kruger area.



# PRIVATE GAME FARM

---

## LECTURES

This program has been simplified into “easy to understand” practical subjects and lectures in order that volunteers can apply the knowledge immediately to his / her assignment or bush experience.



This training programme and study course has been designed to:

- bring the student in close contact with nature, wildlife and conservation.
- encourage eco-friendly utilization of South Africa’s nature and wildlife resources.
- point out ways and methods to generate revenue to be re-invested in conservation and preservation.

## A TYPICAL WORKING DAY

Volunteers will work an average of 2 – 3 hours per day. The rest of their time is for assignment research, leisure, social interaction with other students, excursions to other projects and sight seeing trips, which can include Kruger National Park, Blyde River Canyon, sleep outs and hiking